

# INTRODUCING OUR **COLD ROOM RANGE**

Cost Effective, Reliable And Sustainable Refrigerated Cold Rooms



-40°C to +45°C COLD ROOM  
**POLAR°STORE**  
SOLUTIONS THAT STACK UP

**Dawsongroup** | global  
Asset specialists since 1935





# Main Features – Cold Rooms

Dawsongroup | global introduces its most simple cold storage product, the Polar<sup>o</sup>store Cold Room, which is available for hire or sale anywhere in the world. With an interior temperature range of -40°C to +45°C, this cold store can be delivered as a single unit or built as a modular solution (see our Polar<sup>o</sup>store Modular brochure).

Using the latest refrigeration technology our cold room maintains that critical temperature 24/7 and is suitable for maintaining a specific temperature. Along with full service and maintenance when hired or a 5-year warranty when purchased new, it offers your business peace of mind knowing your unit is durable, energy efficient and cost effective.

## Standard features:

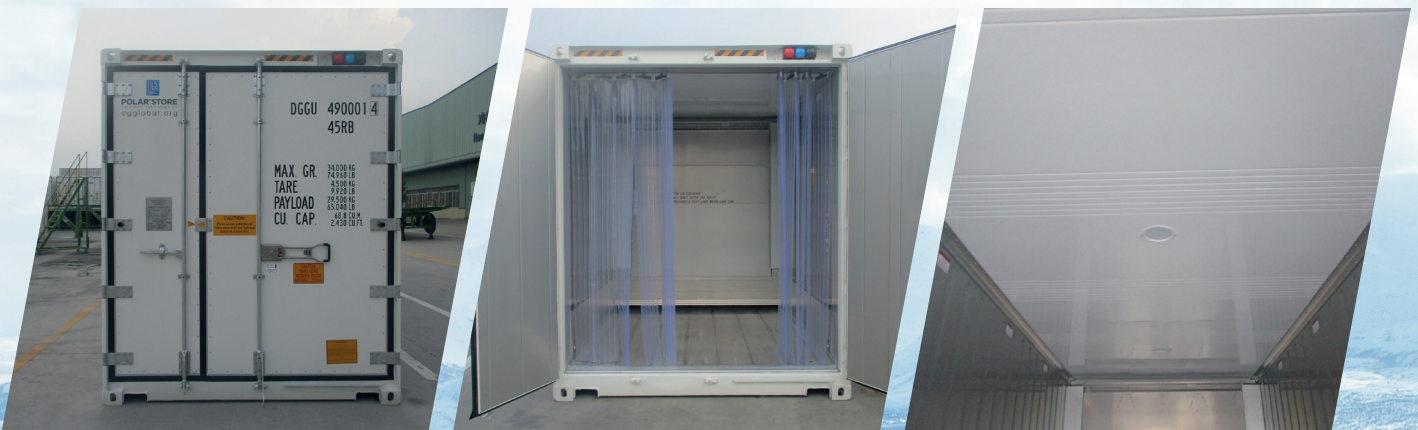
- All our units are High Cube (9ft6", 2.9m)
- Easy open double doors with 70/30 split
- Internal release & lockable door handle
- Flat Floor with 4 drain holes
- LED internal lighting
- Sliding strip curtain
- Door cut out switch
- Audio & visual person trapped alarm
- Audio & visual mains failure alarm
- Semi-permanent loading ramp
- Plug and play  
(18m cable, 5 pin plug, 440v, 3ph, earth & neutral)
- -40°C to +45°C

## Optional Features

- Remote temperature monitoring
- Support legs for dock loading or uneven ground
- Internal shelving
- Clip on generator set for intermittent mains power

## Why Dawsongroup | global?

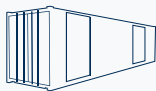
Dawsongroup have grown to become the largest independent asset rental business in the UK and Europe. The group has grown to cover specialisations in temperature-controlled solutions for hire and sale because of global expansion. We are committed to service excellence and our flexible service & maintenance packages provide customers with an increased flexibility in asset ownership without risking upfront costs.





# Bespoke Needs

Our cold rooms come in standard layouts with 70/30 entrance one end, single fridge at the other. If you have a more bespoke request, we can easily accommodate these, including:



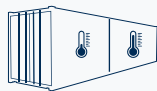
Single or multi side access



Pharma Spec (GDP Compliant)



Dual refrigeration systems



Dual Temp Compartments

Just contact a member of the team via phone +31 (0)10 495 29 55 / +32 (0)78 15 16 05 or email [info@dawsongroup.nl](mailto:info@dawsongroup.nl) / [info@dawsongroup.be](mailto:info@dawsongroup.be)

	Operation range	Pallet capacity		Container size	Model number
		EURO	UK		
Cold room	-40° to +45°C	3	3	10ft (3m) HC	PS1096
		10	9	20ft (6m) HC	PS2096
		22	20	40ft (12m) HC	PS4096



5-year warranty on new refrigeration units



24/7 Breakdown line



Delivery worldwide



Global service network

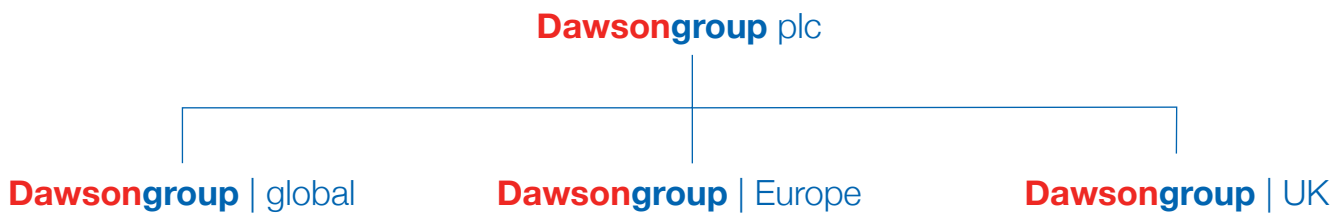


Full on hire maintenance

# POLAR°STORE

SOLUTIONS THAT STACK UP

- COLD ROOM
- BLAST FREEZER & CHILLER
- SUPERFREEZER
- MODULAR
- MEAT RAIL



## For all enquiries:

Please call +31 (0)10 495 29 55 | +32 (0)78 15 16 05 or email

[info@dawsongroup.nl](mailto:info@dawsongroup.nl) / [info@dawsongroup.be](mailto:info@dawsongroup.be)

Visit our website at [dawsongroup.nl](http://dawsongroup.nl), [dawsongroup.be](http://dawsongroup.be) or search Dawsongroup global

